

KATY BEH

CONTEMPORARY JEWELRY

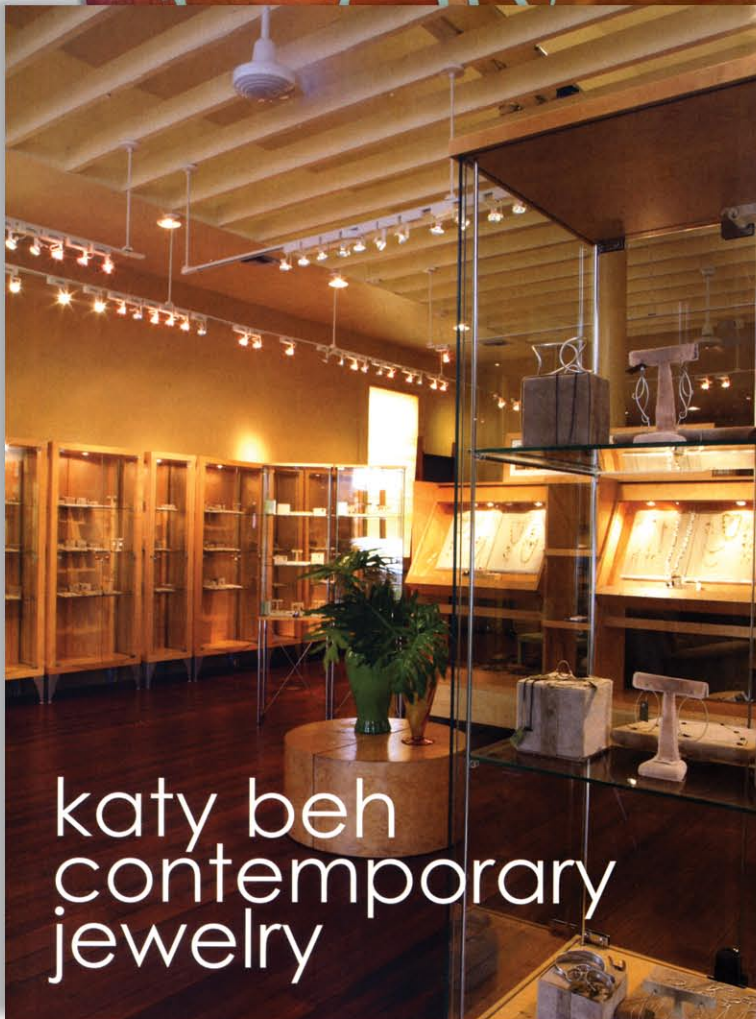


3708 Magazine Street
New Orleans, Louisiana 70115
(T) 504-896-9600 (T) 877-528-9234
wishes@katybeh.com www.katybeh.com



March 2008 *New Orleans Homes & Lifestyles*

“The space is very me, just like my collection of jewelry” Beh says. “I have included tons of family photographs into the décor, as well as family furnishings like a refurbished 1940s sofa and chair that belonged to my grandmother. So ultimately, the store’s décor is an assemblage, much like a woman’s jewelry collection—put together from years of heirlooms, occasions, surprises and treats. The old and new get along quite nicely, I think.”



WHEN HER LEASE EXPIRED in 2005, Katy Beh didn't have to look very far to find a new place for her gallery to call home. As luck would have it, the jewelry designer and owner of Katy Beh Contemporary Jewelry was able to literally walk her boxes across the street from 3701 Magazine St. to her new storefront situated at 3708 Magazine St. Despite the usual obstacles and inconveniences associated with relocating, it was an easy move and one that Beh believes was “truly meant to be.”

Just one look was all it took to convince Beh and her husband, business partner, Tom, to purchase the former double shotgun. Not only was it twice the size of Beh's first gallery, but it also had been renovated just three years earlier by British architect Rob Steal. Interestingly enough, Beh watched the renovation from her former space across the street.

“The silhouette of the shotgun house is still intact, so it fits into the repetitive pattern of the signature fabric of Magazine Street,” Beh says. “Steal also retained the classic lines and original heart-of-pine floors but opened the ceiling of the showroom to create a vaulted, beam-spanned space. The facade incorporates full-length glass windows that let in tons of natural light. The light lifts the space to create a stage-like effect to really showcase the jewelry.”

The casework and cabinetry is a combination of birch, chrome and glass that provides a minimal and modern look that is also functional and organized. According to Beh, “It's noninvasive and allows the jewelry to be the star.” With everything to her liking, Beh was thankful to have little left to change upon arrival. The greatest undertaking was the lighting design and installation that was completed by architects Greg Hackenberg and Jerry Saradet of Curtis H. Stout Inc.

“This space is very me, just like my collection of jewelry” Beh says. “I have included tons of family photographs into the décor, as well as family furnishings like a refurbished 1940s sofa and chair that belonged to my grandmother. So ultimately, the store's décor is an assemblage, much like a woman's jewelry collection — put together from years of heirlooms, occasions, surprises and treats. The old and new get along quite nicely, I think.” •